



SuperCore™

Semi-Automatic Biopsy Instrument Bundles



Mammotome

Simple and Precise.

Small, Lightweight Design

The SuperCore™ instrument may be operated with one hand, leaving the other hand free to manage an ultrasound probe.

Adjustable Specimen Notch

The specimen notch is adjustable (exposing either 19 mm or 9.5 mm), providing clinical flexibility.

Safe Positioning

The specimen notch may be safely positioned in the lesion before the spring-loaded cutting cannula is fired.

Precise Targeting

Numerically ordered centimeter markings facilitate precise depth placement.

Enhanced Echogenic Tip

Needles have an improved echogenic tip for an accurate placement under ultrasound guidance.



The SuperCore™ biopsy instrument is lightweight, adjustable and easily maneuvered during the procedure.



SuperCore™ Semi-Automatic Biopsy Instrument

GAUGE	LENGTH	CODE
14G	6cm	701114060M
	9cm	701114090M
	15cm	701114150M
16G	6cm	701116060M
	9cm	701116090M
	15cm	701116150M

The SuperCore™ instrument can be combined with your choice of marker. Every product is sold in a package of 10 units.

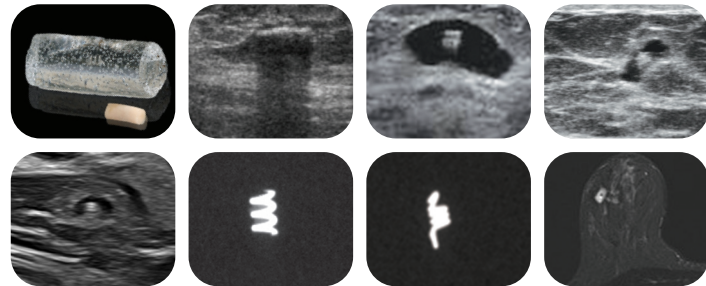
Customize Your Bundle With Your Choice of Marker

HydroMARK™

Breast Biopsy Site Marker

Enduring

Exclusive hydrogel technology provides long-term ultrasound visibility in percutaneous breast biopsy procedures, including axillary lymph nodes.¹



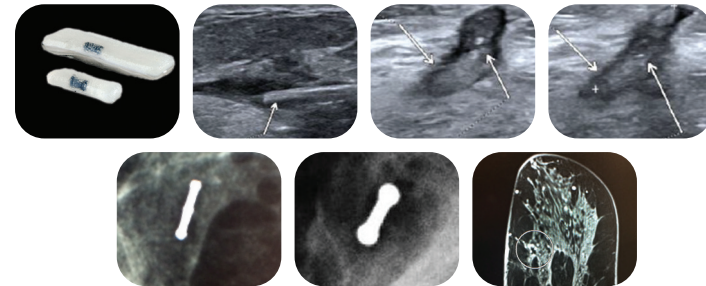
GAUGE	SHAPE	CODE
15G		4010-02-15-T1
		4010-02-15-T3
		4010-02-15-T4
		4010-02-15-S1
18G		4010-02-15-S3
		4010-02-18-T3

MammoSTAR®

Biopsy Site Marker

Natural

Non-metal marking alternative with a long-lasting beta glucan carrier plug for unique patient sensitivities.



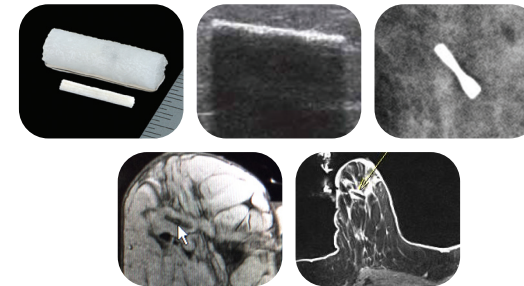
GAUGE	SHAPE	CODE
14G		STAR1401
		STAR1402
		STAR1403

CorMARK®

Biopsy Site Identifier

Precise

Rapid collagen expansion for unsurpassed placement accuracy.²



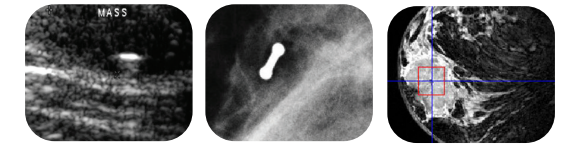
GAUGE	SHAPE	CODE
14G		MAM3014
		MAM3015

BiomarC®

Biopsy Site Marker

Efficient

Non-metal marking alternative, without a carrier plug, for unique patient sensitivities.



GAUGE	SHAPE	CODE
13G		40314
14G		40321
		40313
17G		40316

Introducer*

Echogenic trocar tip enables enhanced ultrasound visualization for multiple sampling from a single percutaneous puncture. Durable skin stop reliably controls forward migration.

*Sold Separately



GAUGE	LENGTH	CODE
13G	3.9cm	MCXS1409LXM
	9.9cm	MCXS1415LXM
15G	3.9cm	MCXS1609LXM
	9.9cm	MCXS1615LXM

P = PETITE
T = TITANIUM
S = STAINLESS

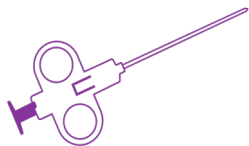
*Markers are sold separately

1. Indication for lymph node using HydroMARK™ markers is limited to the United States with other country registrations pending.

2. MammoMARK™ Device Test - PRC043442 Rev B, pgs. 2, 5-6: Collagen Expansion

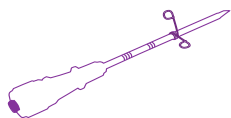
3 Simple Steps to Order:

1 Select Needle Size

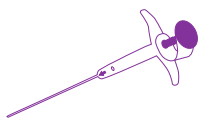


Choose preferred gauge (14G or 16G) and length (6cm, 9cm and 15cm).

2 Select Optionally



Choose preferred introducer gauge (13G or 15G) and length (3.9cm or 9.9cm).



Choose preferred marker shape and gauge (refer to inner panel for product code).

3 Place Order



Call us at 1-877-926-2666 to place your order.

Mammotome

mammotome.com

Product may not be approved or available in your region. Please check with your local Mammotome representative.

© 2022 Devicor Medical Products, Inc. All rights reserved. Devicor, Mammotome, HydroMARK, CorMARK and MammoSTAR are registered trademarks of Devicor Medical Products, Inc., in the USA and optionally in other countries. Biomarc is a registered trademark of Carbon Medical Technologies, Inc. in certain countries. Used with permission. Other logos, product and/or company names might be trademarks of their respective owners. MDM# 210871 Rev 7/22