

Mammotome DualCore™

Dual Stage Core Biopsy System

Lightweight. Precise. Reliable.



Mammotome DualCore™

Dual Stage Core Biopsy System

Mammotome DualCore™ is a dual stage core biopsy system used for ultrasound soft tissue biopsies. This device is lightweight, precise, and reliable, offering a spring-loaded action for quality sampling capability.



3 PROGRAMMABLE FIRING MODES

Automatic Mode ('A' Button)

Simultaneous release of the stylet and cutting cannula to obtain tissue sample.

Delay Mode ('D' Button)

Releases the stylet only and allows the physician to verify needle position before releasing the cutting cannula.

Zero Throw Mode

Offers precision and reduces the threat of damage to deeper tissue with no forward throw of the needle.



ONE-HANDED OPERATION

Enables convenient handling of ultrasound probe



LIGHTWEIGHT AND ERGONOMIC HANDLE

Limits needle movements, improving accuracy



SHARP BEVEL TIP

Helps navigate to even the most challenging lesions



SMART DESIGN

Minimizes vibrations for quality sample collection



OPTIONAL COAXIAL INTRODUCER

Allows for multiple samples from one percutaneous puncture, minimizing damage to surrounding tissue

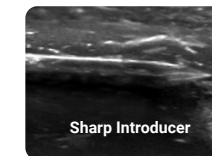


CLEAR ULTRASOUND VISIBILITY

Allows for more accurate needle placement



Mammotome DualCore™
Needle Aperture



Sharp Introducer

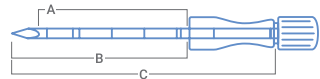
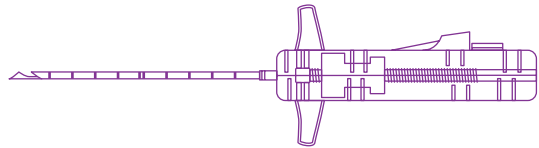
Product Codes/Specifications

Includes Mammotome DualCore™ System with Coaxial Introducer

Mammotome DualCore™ System

Coaxial Introducer Set (Cannula and Sharp Introducer)

GAUGE	CODE	LENGTH	GAUGE	CANNULA LENGTH (A)	SHARP INTRODUCER LENGTH (B)	SHARP INTRODUCER FULL LENGTH (C)
12G	MCNX1210	10cm	11G	4.5cm	5.475cm	7.75cm
	MCNX1216	16cm		10.5cm	11.475cm	13.75cm
14G	MCNX1410	10cm	13G	5.1cm	5.85cm	7.75cm
	MCNX1416	16cm		11.1cm	11.85cm	13.75cm
16G	MCNX1610	10cm	15G	5.2cm	5.80cm	7.77cm
	MCNX1616	16cm		11.2cm	11.8cm	13.77cm



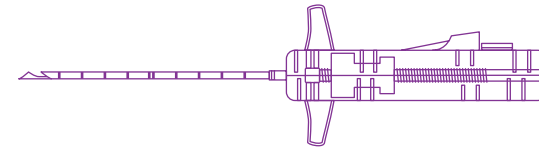
A = cannula length
 B = tip of sharp introducer to base of cannula
 C = full length of sharp introducer

qty: 5 per box

Includes Mammotome DualCore™ System

Mammotome DualCore™ System

GAUGE	CODE	LENGTH
12G	MCN1210	10cm
	MCN1216	16cm
14G	MCN1410	10cm
	MCN1416	16cm
16G	MCN1610	10cm
	MCN1616	16cm



Technical Specifications

Attribute	Specification
Throw	25mm
Sample Notch	20mm
Depth Markings: Core Needle Stylet	Yes • Single marks every 10mm; double markings every 50mm • 14G and 16G devices; marks start 10mm from tip of fully loaded probe • 12G devices; marks start 20mm from tip of fully loaded probe
Depth Markings: Co-Axial Introducer Needle	Yes • Single marks every 10mm; double markings every 50mm
Dead Space	12G = 6.8mm 14G = 6.0mm 16G = 5.5mm

When used for breast biopsy; the Mammotome DualCore™ system is indicated to provide breast tissue samples for diagnostic sampling of breast abnormalities only.

Mammoth® Markers: Our Complete Ultrasound Solution

HydroMARK™ & HydroMARK™ Plus

Breast Biopsy Site Marker

Breast Biopsy Site Marker

Exclusive hydrogel technology provides long-term ultrasound visibility.^{1,2}



HydroMARK® marker



HydroMARK® Plus marker

GAUGE	SHAPE	CODE
15G-T		4010-02-15-T1
		4010-02-15-T3
		4010-02-15-T4
		4010-02-15-T5*
		4010-02-15-T6*
	SS	
		4010-02-15-S3
18G-T-PC		4010-02-18-T3

*HydroMARK™ Plus markers

CorMARK®

Biopsy Site Identifier

Rapid collagen expansion for unsurpassed placement accuracy.³



GAUGE	SHAPE	CODE
14G-T		MAM3014
		MAM3015

LumiMARK™

Biopsy Site Marker

Three distinctive, multifaceted 3D shapes designed for easy identification from any angle.⁴



GAUGE	SHAPE	CODE
15G-N		LM0215T
		LM0215L
		LM0215R

MammoSTAR® & Biomarc®

Biopsy Site Marker

Biopsy Site Marker

Natural non-metal marking alternative for unique patient preferences.



MammoSTAR® marker



Biomarc® marker

GAUGE	SHAPE	CODE
10G-CC		STAR1001
		40230*
13G-CC		40314*
14G-CC-PC		STAR1401
		STAR1402
		STAR1403
		40321*
PM		40313*
17G-CC		40316*

*Biomarc® markers

T = TITANIUM SS = STAINLESS STEEL CC = CARBON COATED CERAMIC N = NITINOL PM = PETITE MARKER PC = PETITE CARRIER

Markers are sold separately

Order Placement



Contact your Customer Service Representative at **1-877-926-2666** between the hours of 8:00am and 5:00pm EST. Shipping details and an order confirmation number will be provided to you upon completion of your order.



Send your order via fax to your Customer Service Representative at **1-888-260-6362**.



Send your order via email to your Customer Service Representative at **us.customerservice@mammotome.com**.

Technical Support



For technical support contact us via phone at **1-877-926-2666 (option 3)** or by email at **TechnicalSupport@mammotome.com**.

Mammotome • mammotome.com

For complete product details, see Instructions for Use.

1. Sakamoto, N., Fukuma, E., Tsunoda, Y. et al. Evaluation of the dislocation and long-term sonographic detectability of a hydrogel based breast biopsy site marker. Breast Cancer 25, 575–582 (2018). <https://doi.org/10.1007/s12282-018-0854-8>
2. Pinkney, Journal of Diagnostic Medical Sonography 29(4) 151 – 158, DOI 10.1177/8756479313486962 1.
3. MammoMARK® Device Test – PRC043442 Rev B, pgs. 2, 5-6: Collagen Expansion
4. LumiMARK™ Device Tests: PCR-000340 System Design, PCR-000579 Summative Usability, ES-002647 Claims Assessment

The Mammotome DualCore™ system is only available in the United States and Canada.

Product may not be approved or available in your region. Please check with your local Mammotome representative.

© 2024 Devicor Medical Products, Inc. All rights reserved. Devicor, Mammotome, HydroMARK, CorMARK and MammoSTAR are registered trademarks of Devicor Medical Products, Inc., in the USA and optionally in other countries. Mammotome DualCore and LumiMARK are trademarks of Devicor Medical Products, Inc., in the USA and optionally in other countries. BiomarC is a registered trademark of Carbon Medical Technologies, Inc. in certain countries. Used with permission. Other logos, product and/or company names might be trademarks of their respective owners. MDM# 230405 Rev 10/24

