



# Mammotome<sup>®</sup>

We are dedicated to helping you help your patients, so you can trust us to be there with you – providing an array of products, superb clinical training and outstanding customer service.

For more information about Mammotome<sup>®</sup>, Neoprobe<sup>®</sup> and other products, or to place an order, contact your Mammotome<sup>®</sup> sales representative or call 1-877-64 Devicor (877-643-3842).

Mammotome<sup>®</sup> A Division of  DEVICOR<sup>®</sup> MEDICAL PRODUCTS, INC.

©2010 Devicor Medical Products, Inc. All rights reserved.  
Mammotome<sup>®</sup> is a trademark of Devicor Medical Products, Inc.  
For complete product details, see Instructions for Use.  
LIT#10-0836 / Qty500 / Rev 9-10

[mammotome.com](http://mammotome.com)

This is the point of Confidence



# Mammotome<sup>®</sup>

Mammotome<sup>®</sup> MI is now available to you, your high-risk patients and the ones they love.\*

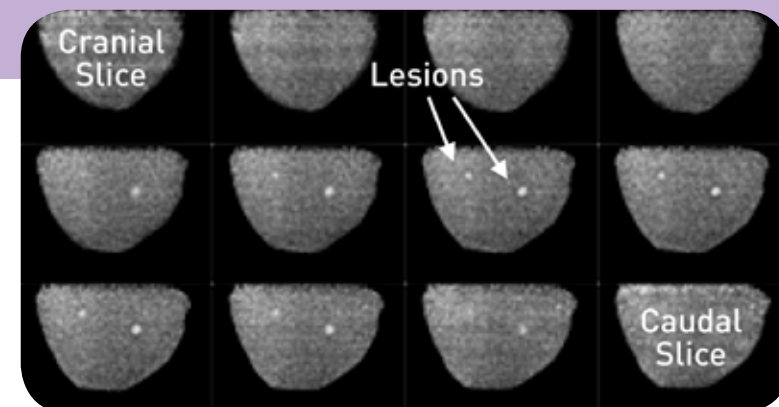
\*Schilling. High Resolution PEM: Utility in Pre-Surgical Planning for Breast Cancer Patients. SNM Meeting 2008.

## This is the point of Accuracy

Mammotome® MI complements your existing Mammotome® unit perfectly and offers you and your high risk patients a breast biopsy guided by molecular imaging technology.

### The value of Molecular Imaging of the breast:

- Correlates to mammographic views (CC, MLO & TL)
- Views breast on molecular level vs. anatomic
- High Sensitivity (91%) and Specificity (93%) rates\*
- Aids in Determining extent of disease
- Monitor patient response to chemotherapy
- Advantageous for patients with dense breast tissue



Above: 12-slice tomographic view illuminating the molecular activity within the breast.  
Right: Mammotome® MI 510(k) cleared for vacuum-assisted biopsy.

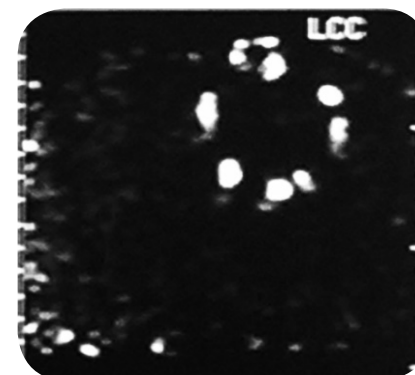


## This is the point of Confidence

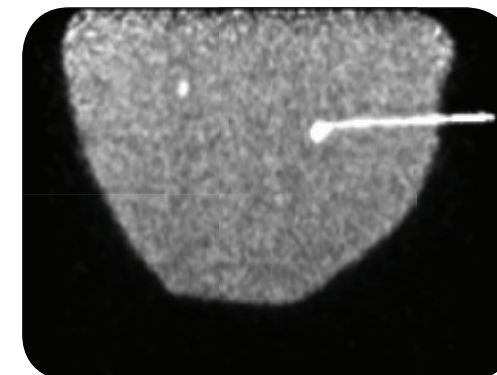
With an MI-guided biopsy, the picture is clear. The radiotracer rod is centered in the sampling aperture, so you know you're in position.

### Compatible with following systems:

- Naviscan PEM Scanner with Stereo Navigator™ targeting software
- Dilon 6800 Gamma Camera with the GammaLoc® targeting system (BSGI)



Specimen Scan for "hot" samples.



Illuminated Line Source verifying targeting accuracy.



Radiotracer rod in center of sample aperture.



Sampling tissue with 8g Mammotome MI.



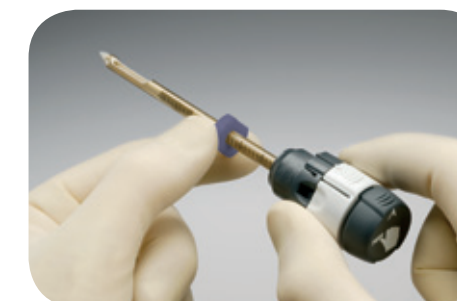
Ability to deploy tissue marker through targeting set or bladeless probe.

## This is the point of Trust

- Full Tissue Displacement (FTD) targeting system
- 8g Probe for larger tissue samples -- 250mg average size\*
- Take a Sample, See a Sample -- the first step in diagnostic concordance
- Z-Lock -- six times stronger holding power than other systems\*
- Universal Cube -- unsurpassed breast tissue access
- Bladeless Sampling Needle -- helps maintain targeted tissue through multiple instrument exchanges



- The proven Mammotome system
- More than 3.4 Million Procedures
- Upgradeable in 4 modalities
- Unparalleled Clinical Training, Service and Professional Education



\*Schilling K, Narayanan MS, Kalinyak JE. Multimodality Effect of Breast Density, Menopausal Status And Hormone Use in High Resolution Positron Emission Mammography. Presented at the 94th Annual Meeting of the Radiological Society of North America, November 2008.